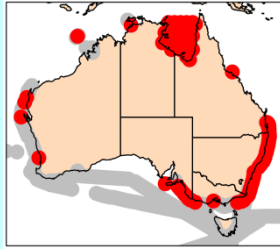
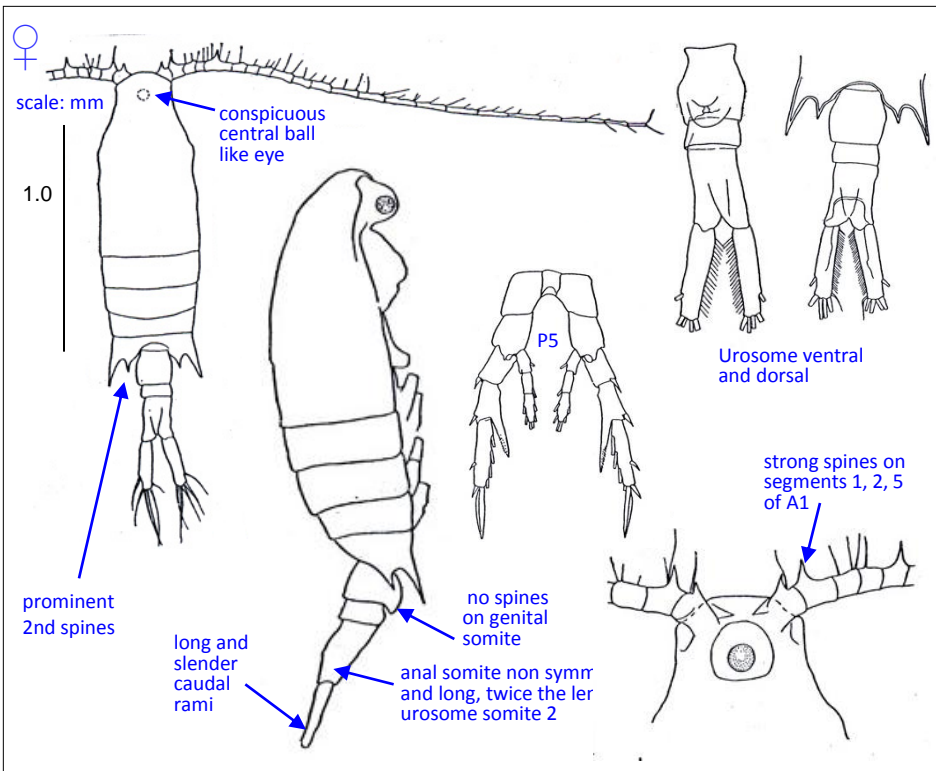


# Centropages furcatus

(Dana, 1849)



**Phylum** Arthropoda  
**Order** Calanoida  
**Family** Centropagidae



Brodsky (1962); Chen & Zhang (1965)

- Synonyms**  
*Catopia furcata* Dana, 1849  
*Centropages lenuculari* Oliveira, 1946
- Size**  
 Female: 1.38 – 1.90 mm
- Genus notes**
- Small to medium size
  - Cephalosome and pedigerous somite 1 are fused (fusion lines visible on sides)
  - Single naupliar eye
  - Lateral corners of posterior prosome often end in asymmetrical points
  - Characteristic undulating edge on last prosomal somite between spine and urosome
  - Female P5 biramous, exopod segment 2 with a strong, inner spine-like process
  - Male P5 complex, right leg chelate
  - Urosome usually 3-segmented, often with spines, without seminal receptacles

- Female**
- Conspicuous central ball-like eye
  - May be quite transparent
  - Strong spines on segments 1, 2, 5 of A1
  - Prominent second spines between the lateral spines on the last prosome somite and the urosome
  - P5 exopodal segment 2 inner edge spine does not reach distal border of exopodal segment 3
  - No spines on genital somite
  - Anal somite asymmetrical and long, twice the length of urosome somite 2
  - Long and slender caudal rami

- Distribution**
- Epipelagic, coastal, cosmopolitan
  - Most widely distributed species within the genus
  - As far south as subantarctic

- Ecology**
- Cannibalistic feeding has been observed
  - Preys on nauplii of other coastal calanoids
  - Spawns at night
  - Produces resting eggs



C. Davies, CSIRO © 2012

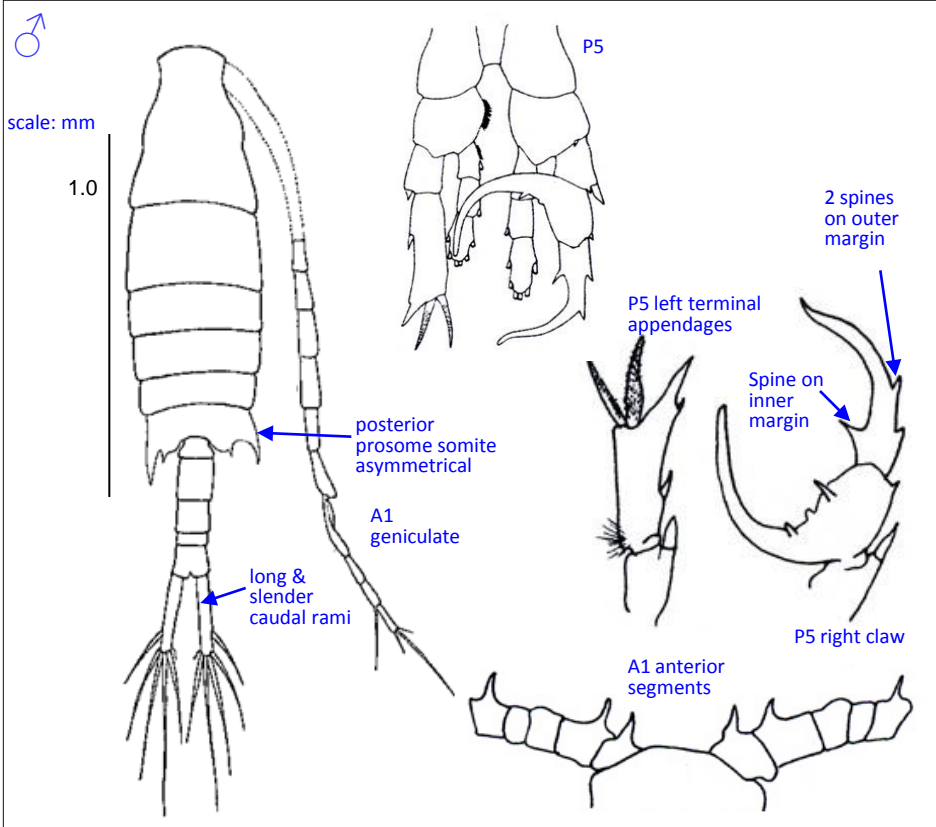
C. Davies, CSIRO © 2012



# Centropages furcatus

(Dana, 1849)

**Phylum** Arthropoda  
**Order** Calanoida  
**Family** Centropagidae



Brodsky (1962), Al-Yamani & Prusova (2003), Chen & Zhang (1965)

**Size**  
 Male: 1.40 – 1.75 mm

- Male**
- Right A1 geniculate
  - May be quite transparent
  - Posterior prosome somite slightly asymmetrical, left side protrudes further than right
  - Prominent second spines between the lateral spines on the last prosome somite and the urosome
  - Right P5 extension on exopodal segment 2 has a rounded protrusion on the proximal portion; exopodal segment 3 claw is stout and has a spine on the inner margin and 2 spines on outer margin
  - Left P5 exopodal segments 2-3 with long terminal fixed appendages
  - Long and slender caudal rami

- Source**
- Al-Yamani & Prusova (2003)
  - Bradford Grieve (1999)
  - Brodsky (1962)
  - Checkley et al. (1992)
  - Chen & Zhang (1965)
  - Conway (2003)
  - Daan et al. (1988)
  - Marcus (1989)
  - Razouls et al. (2012)

(Full reference available at <http://www.imas.utas.edu.au/zooplankton/references>)