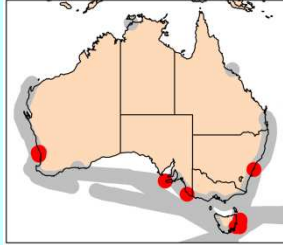
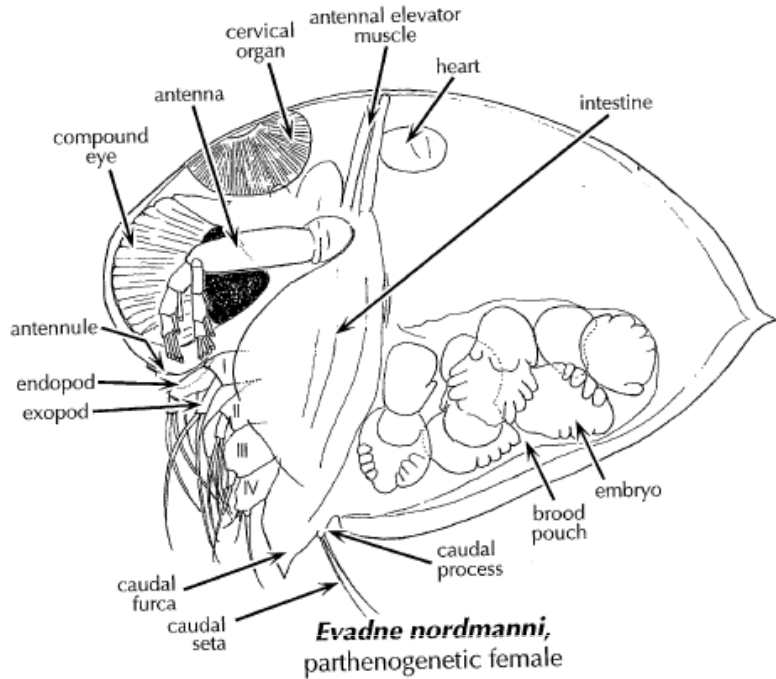


Evadne nordmanni

Lovén, 1836



Phylum Arthropoda
Order Diplostraca
Family Podonidae



Onbé (1999)

Synonyms

None

Size

Female: 0.4-1.4 mm

Species notes

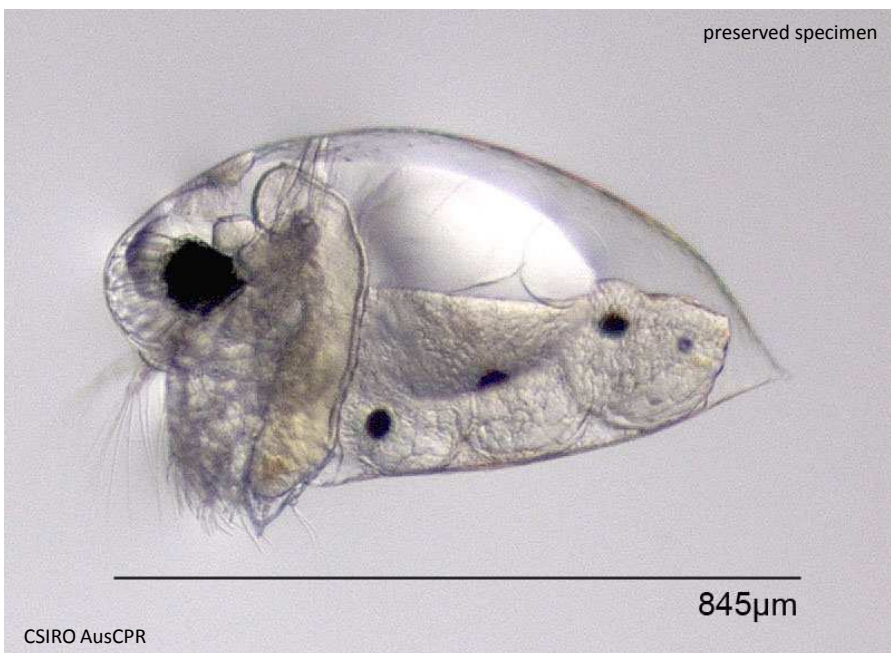
- Carapace always pointed at posterior end
- 2 antennal elevator muscles lying parallel to each other

Female

- In lateral view oval or triangular (depends on division stage of embryos)
- Brood pouch narrowing posteriorly, pointed or more or less rounded with short spine
- Head small compared to body, anteriorly rounded regularly, faintly convex near antennulae
- Compound eye large, but not occupying the forehead
- Antennulae very small, fused at base; pointed in lateral view, rounded distally, bearing 3-4
- Legs rather short, first leg not elongated
- Postabdomen very short and bifurcated
- Up to 7-8 embryos in the brood pouch

Distribution

Ecology

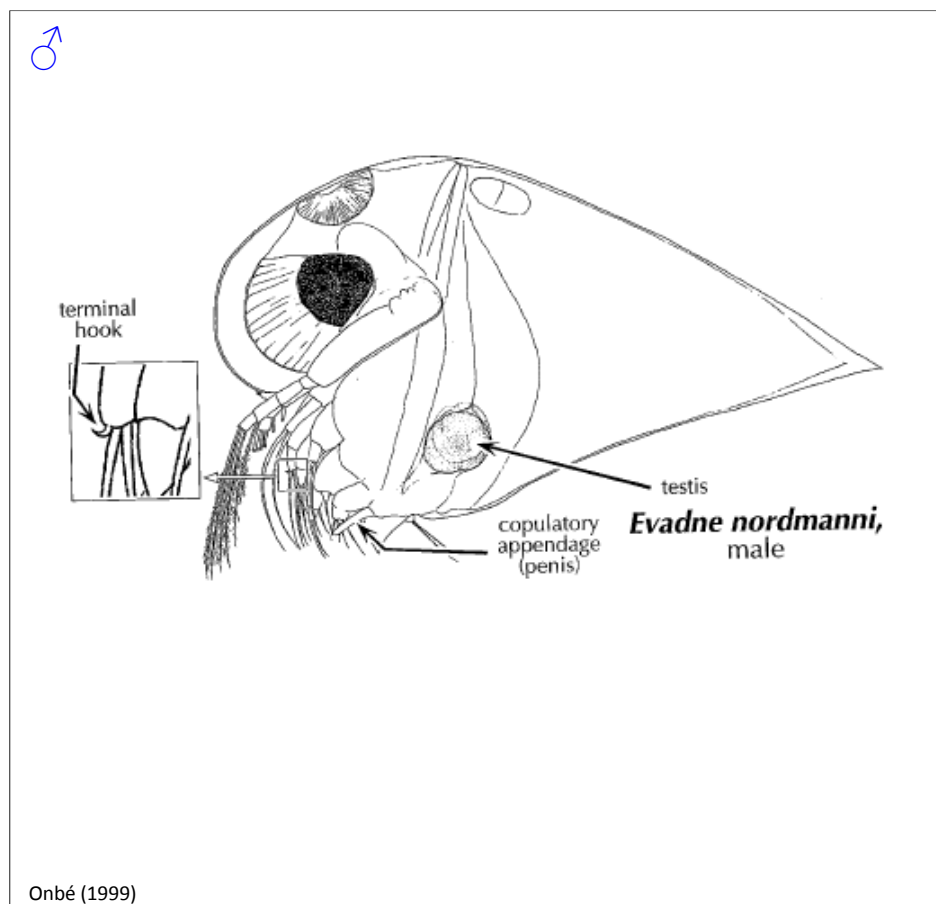


CSIRO AusCPR

Evadne nordmanni

Lovén, 1836

Phylum Arthropoda
Order Diplostraca
Family Podonidae



Size

Male: 0.4-0.8 mm

Male

- Carapace triangular in lateral view, separated from head with adorsal depression
- Compared to female, head and eyes are larger and lower edge is curved more sharply
- Distal segment of endopodite of leg 1 has strong, inwardly curved hook
- Copulatory organ is cylindrical, distally with longitudinal grooves

Source

Flößner (1972)

(Full reference available at <http://www.imas.utas.edu.au/zooplankton/references>)