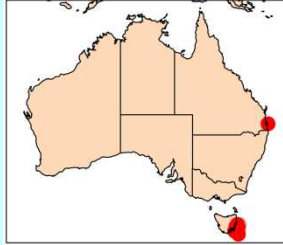


Ihlea magalhanica

Apstein, 1894



Phylum Chordata
Order Salpa
Family Salpidae

Synonyms

None

Aggregate Form

Size
 Up to 22 mm

Body

- Zooids strongly symmetrical
- Almost oval shape
- Small lateral process anteriorly, longer process posteriorly
- Openings are terminal
- Test soft
- Preserved specimens appear flat

Muscles

- 5 asymmetrical body muscles
- M1-M3 join dorsally, M2-M3 join medio ventrally by anastomosis
- M3-M4 approach and may touch on either side
- M4-M5 approach or touch dorsally
- M5 broken ventrally

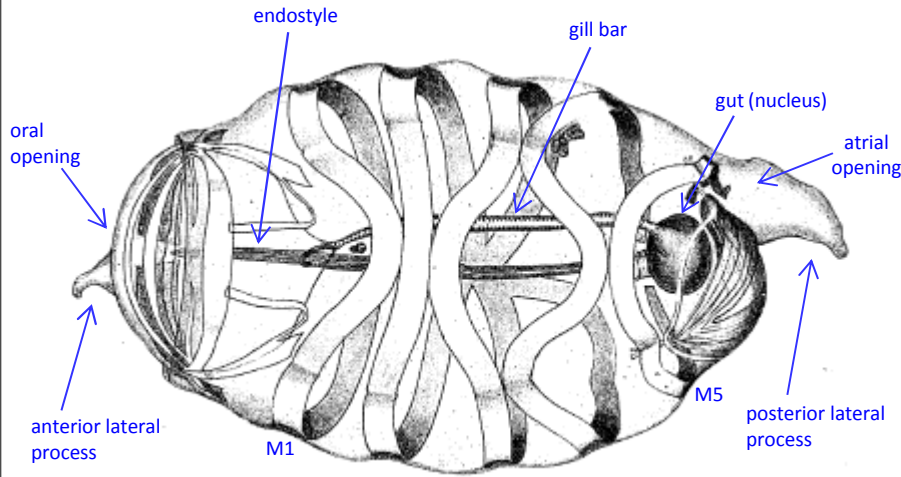
Distribution

- Common in SE Australian waters from October to February

Ecology

- Low tolerance for warm water, Indicator for cold water

Aggregate form



Thompson (1948)

Ihlea magalhanica

Apstein, 1894

Phylum	Chordata
Order	Salpa
Family	Salpidae

Solitary Form

Size

Up to 39 mm (without process)

Body

- Cylindrical
- Soft test
- Openings are terminal

Muscles

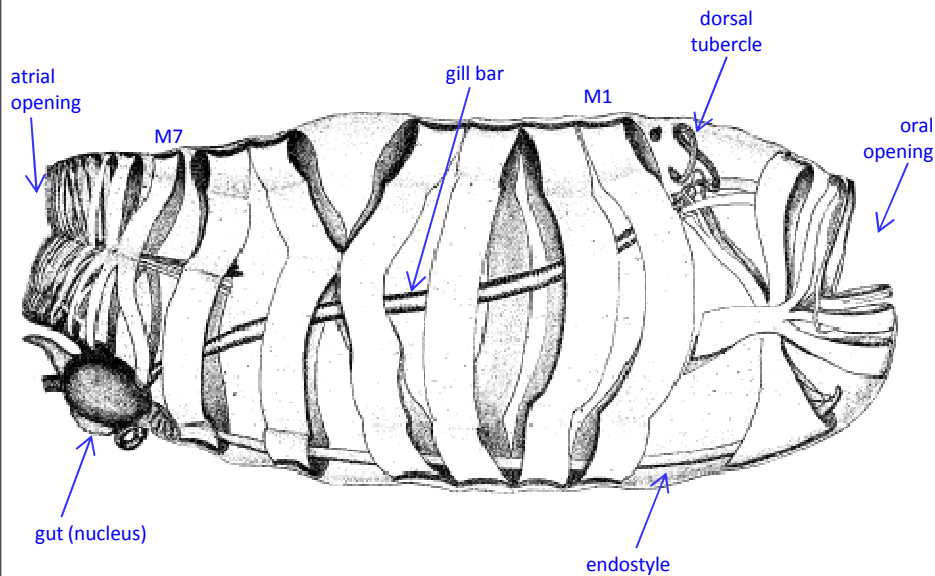
- 7 body muscles variously curved
- Very broad muscles, except M7 which divides ventrally
- M1-M4 appear continuous dorsally and ventrally
- M4-M5 touch laterally
- M5-M6 approach or touch dorsally

Source

van Couwelaar (2003)
Thompson (1948)

(Full reference available at <http://www.imas.utas.edu.au/zooplankton/references>)

Solitary form



Thompson (1948)

Preserved specimen
Maria Island, Tasmania

