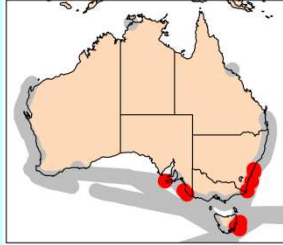


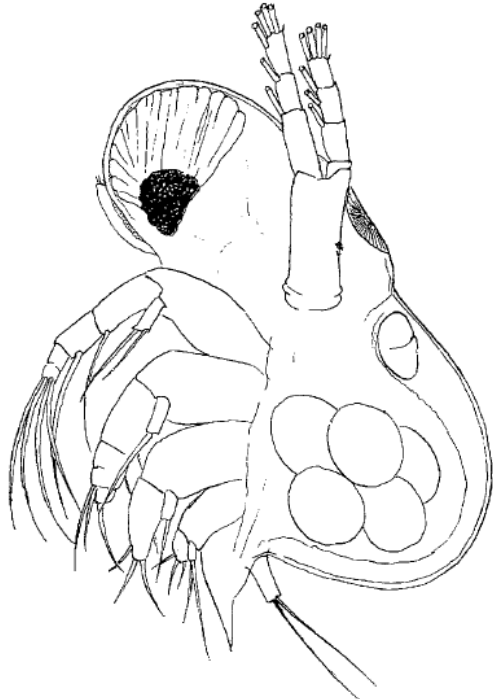
Podon intermedius

Lilljeborg, 1853

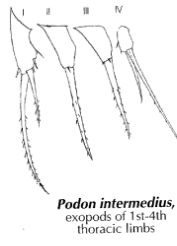


Phylum Arthropoda
Order Diplostraca
Family Podonidae

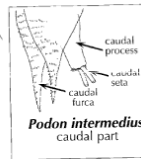
♀



Podon intermedius,
parthenogenetic female



Podon intermedius,
exopods of 1st-4th
thoracic limbs



Podon intermedius,
caudal part

Synonyms

None

Size

Female: 1.1-1.2 mm

Species notes

- Body large & semi-oval
- Caudal rami large & elongated
- Caudal process larger than any other species of *Podon* or *Pleopsis*
- Head short & rounded frontally, eyes large

Female

- Brood pouch small, oval to hemispherical

Distribution

Ecology

Onbé (1999)

preserved specimen

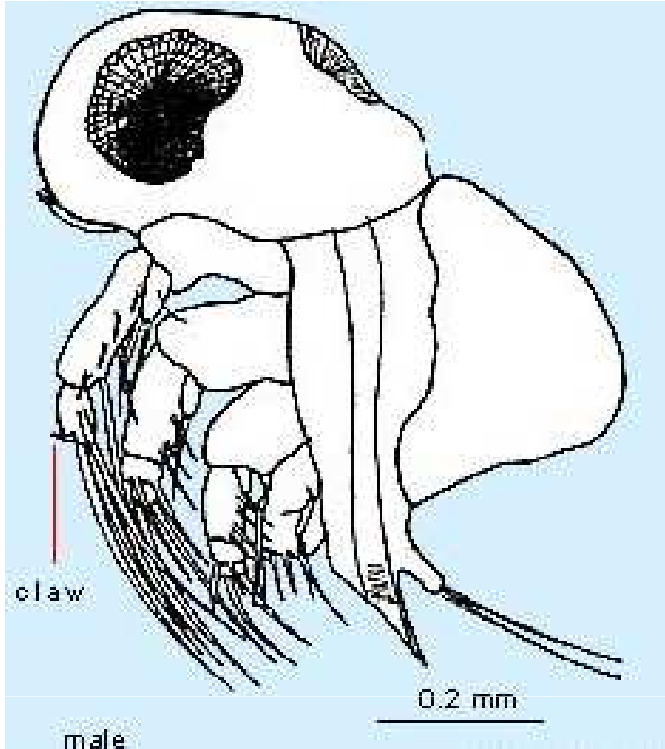


AusCPR

Podon intermedius

Lilljeborg, 1853

Phylum Arthropoda
Order Diplostraca
Family Podonidae



Size

Male: 1.1-1.2 mm

Male

- Smaller than female, carapace sack-shaped & triangular
- Copulatory organ with blunt point

Source

Flößner (1972)

(Full reference available at <http://www.imas.utas.edu.au/zooplankton/references>)

Flößner (1972)