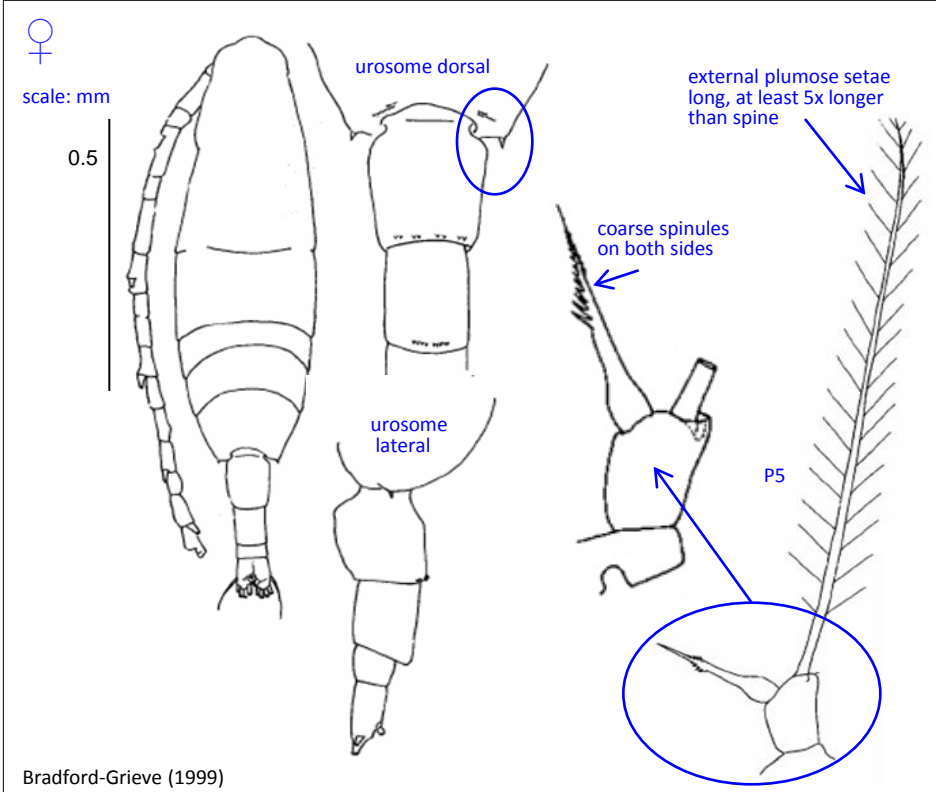


**Phylum** Arthropoda  
**Order** Calanoida  
**Family** Acartiidae

# Acartia (*Acartia*) *negligens*

Dana, 1849



Bradford-Grieve (1999)

**Synonym**  
*Acartia negligens* Dana, 1849

**Size**  
 Female: 1.04 – 1.27 mm

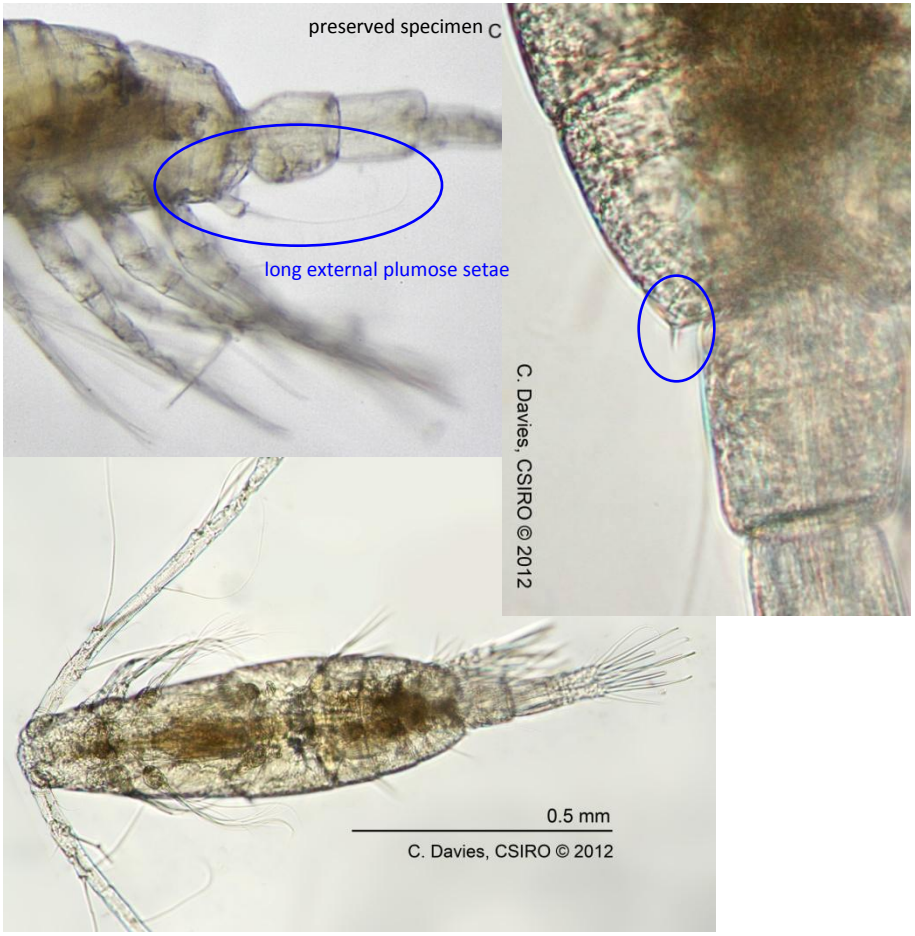
- Genus notes**
- Slender cigar-shaped body
  - Single prominent naupliar eye
  - The A1 setae are long. In males the A1 is geniculate on the right side only
  - The cephalosome and pedigerous somite 1 are separate, pedigerous somites 4 and 5 fused
  - Maxilla form are typically 'basket' like
  - Female P5 uniramous, reduced, symmetrical, comprising basis bearing an inner spine and an outer seta
  - Male P5 uniramous, asymmetrical, larger on right, exopod segment 2 with large inner lobe, segment 3 in form of clasper
  - Female urosome 3 segmented, male 5 segmented
  - Caudal rami short, often slightly asymmetrical, separated from anal somite, 6 setae
  - Robust fan-shaped caudal rami setae

- Subgenus notes**
- Rostral filaments present
  - Male P5 larger on right; exopod segment 2 with large inner lobe, segment 3 in form of clasper

- Female**
- A1 reaches to caudal rami, segment 1 with a small, slender spine
  - Posterior corner of prosome with one or many very small spines and a range of dorsal fine hairs
  - The first two segments of urosome with dorsal spinule on posterior border
  - Outer distal plumose seta on P5, 5 times longer than terminal spine-like segment that has coarse spinules for short distance at about mid length
  - Basis of P5 longer than wide, inner spine dentate

- Distribution**
- One of two species of *Acartia* to primarily inhabit open ocean waters
  - Epipelagic, mesopelagic
  - Cosmopolitan
  - Restricted to between latitudes 40°S and 40°N

- Ecology**
- Eggs released into water
  - Omnivorous
  - Indicator species of Kuroshio Current in winter when NE monsoon prevails



C. Davies, CSIRO © 2012

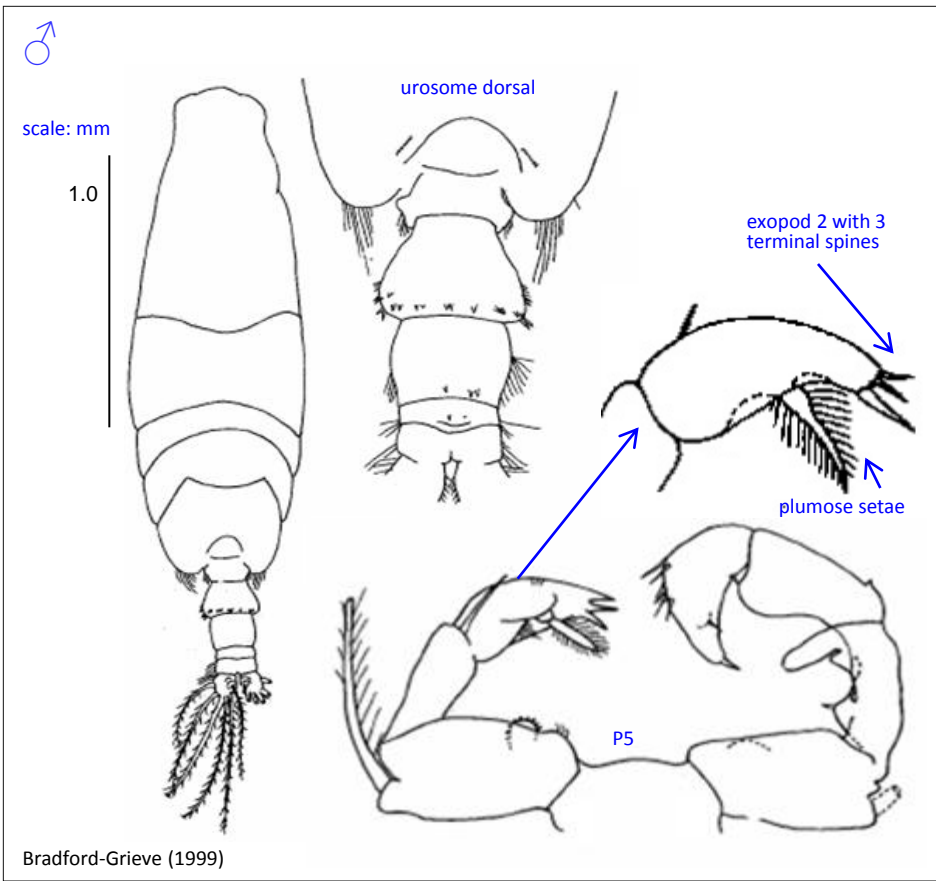
C. Davies, CSIRO © 2012



**Phylum** Arthropoda  
**Order** Calanoida  
**Family** Acartiidae

# *Acartia (Acartia) negligens*

Dana, 1849



**Size**  
 Male: 0.8-1.02 mm

- Male**
- A1 shorter than body
  - Posterior prosome rounded with setae
  - The first 2 urosomal somites hairy laterally; somites 2, 3, 4 and anal somite all with tiny spinules
  - Right P5 basipod 2 with rounded projection on internal border
  - Left P5 exopod 2 with 3 terminal spines and a plumose spine at mid length

**Source**  
 Bradford-Grieve (1999)  
 Greenwood (1978)  
 Hsiao et al. (2011)  
 Mauchline (1998)  
 Razouls et al. (2010)

(Full reference available at <http://www.imas.utas.edu.au/zooplankton/references>)