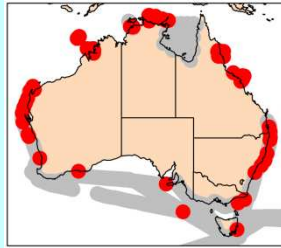


Oithona nana

Giesbrecht, 1893



Phylum Arthropoda
Order Cyclopoida
Family Oithonidae

Synonyms

None

Size

Female: 0.49-0.59 mm

Genus notes

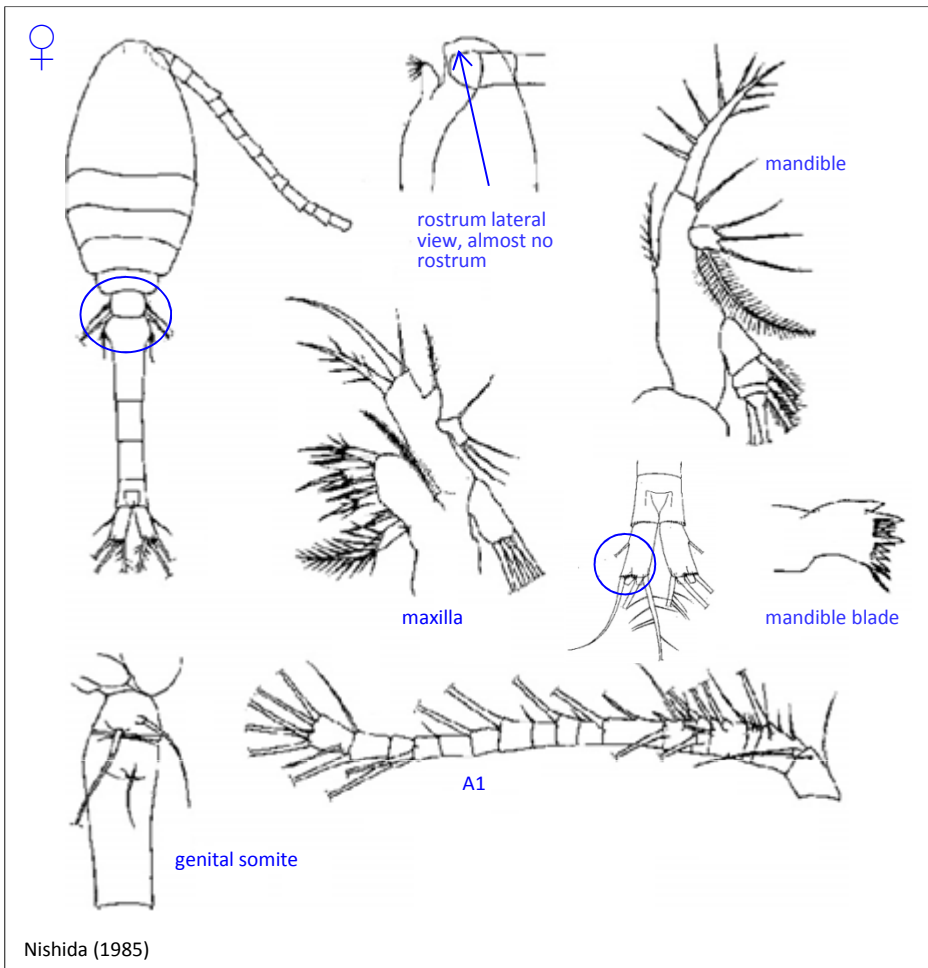
- Prosome short, oval to fusiform, 5 segmented
- Anterior cephalosome rounded or with 1 rostrum
- A1 slender, 2 geniculations in males
- Greatest width generally at posterior margin of cephalosome
- Posterior prosome margin rounded
- P5 represented by 2 lateral processes on pedigerous segment 5
- P6 reduced to lateral process on genital somite
- Urosome slender, 5 segmented in females, 6 segmented in males, genital somite longest, anterior section more or less swollen laterally
- Caudal rami with 1 dorsal, 4 apical and 1 outer marginal setae

Female

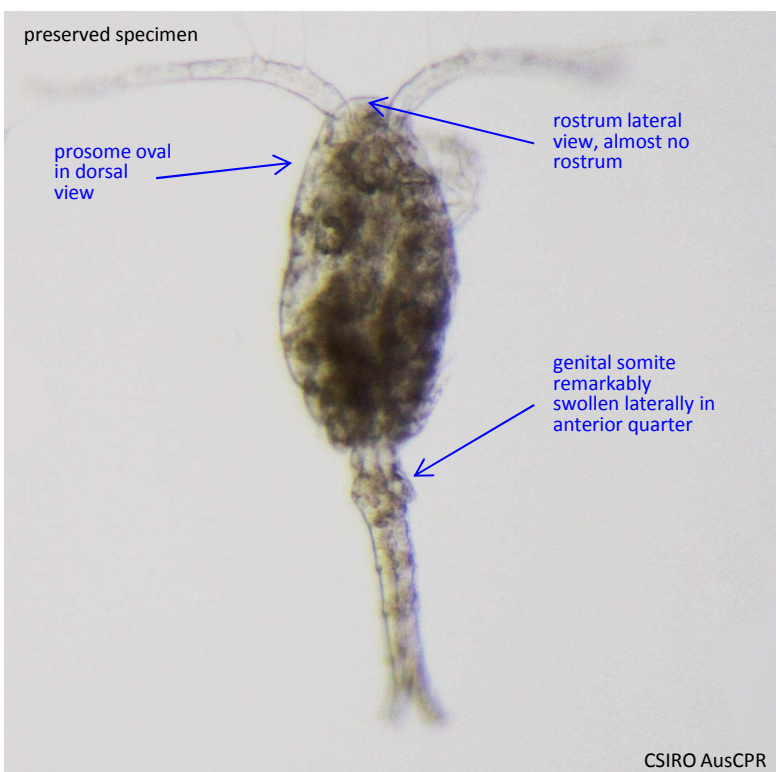
- Prosome oval in dorsal view, greatest width at anterior end of pedigerous somite 1
- Cephalosome narrow and truncated anteriorly in dorsal view, bent ventrally with blunt rostrum in lateral view
- Prosome length 1.9-2.1x width
- Prosome:Urosome 1.0-1.2
- A1 short, as long as prosome
- Almost no rostrum
- Genital somite remarkably swollen laterally in anterior quarter. Anterior margin of swelling nearly semicircular in dorsal view
- Caudal rami dorsal seta, thin and narrow compared to other setae
- Can confuse with *O. attenuata*
- Can come in plumose form with plumose setae

Distribution

Ecology



preserved specimen

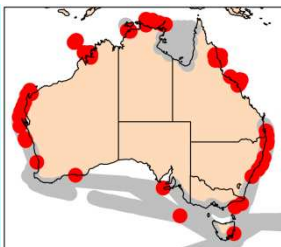


CSIRO AusCPR



Oithona nana

Giesbrecht, 1893



Phylum
Order
Family

Arthropoda
Cyclopoida
Oithonidae

Male

- To be completed

Source

Nishida (1985)

(Full reference available at
<http://www.imas.utas.edu.au/zooplankton/references>)