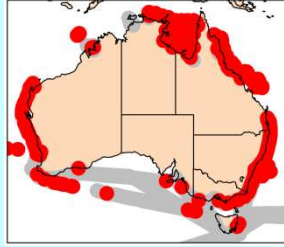


Oithona plumifera

Baird, 1843



Phylum Arthropoda
Order Cyclopoida
Family Oithonidae

Synonyms

None

Size

Female: 1.11-1.51 mm

Genus notes

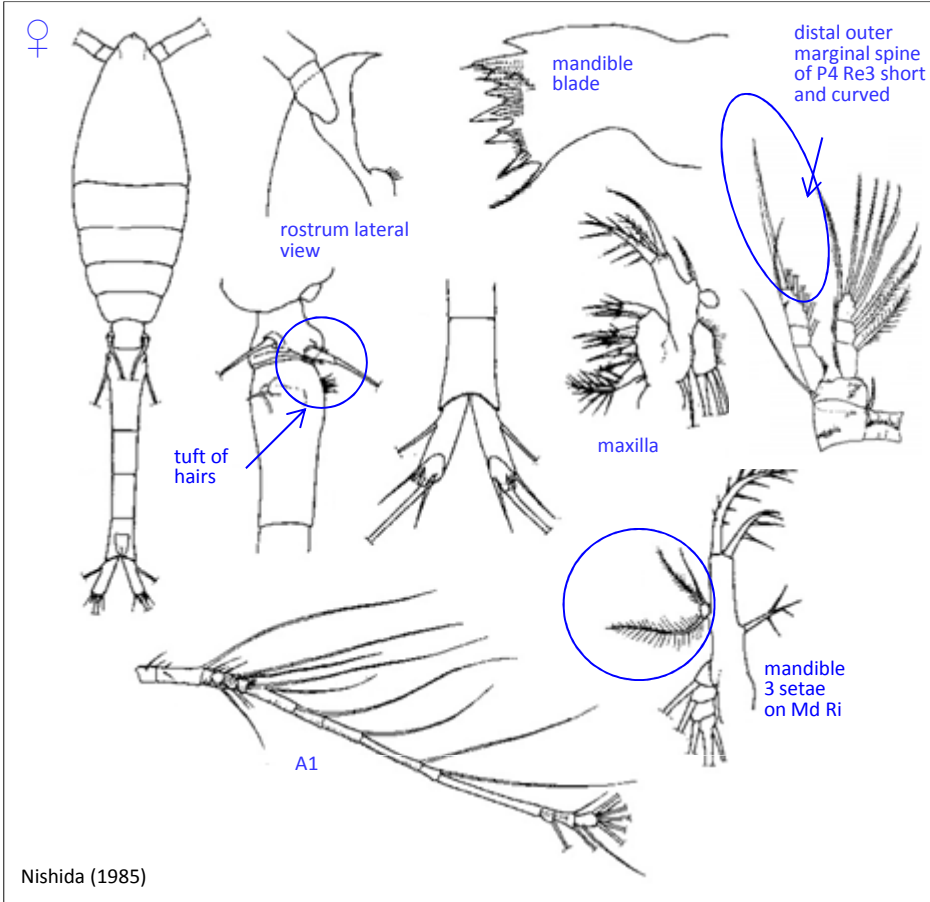
- Prosome short, oval to fusiform, 5 segmented
- Anterior cephalosome rounded or with 1 rostrum
- A1 slender, 2 geniculations in males
- Greatest width generally at posterior margin of cephalosome
- Posterior prosome margin rounded
- P5 represented by 2 lateral processes on pedigerous segment 5
- P6 reduced to lateral process on genital somite
- Urosome slender, 5 segmented in females, 6 segmented in males, genital somite longest, anterior section more or less swollen laterally
- Caudal rami with 1 dorsal, 4 apical and 1 outer marginal setae

Female

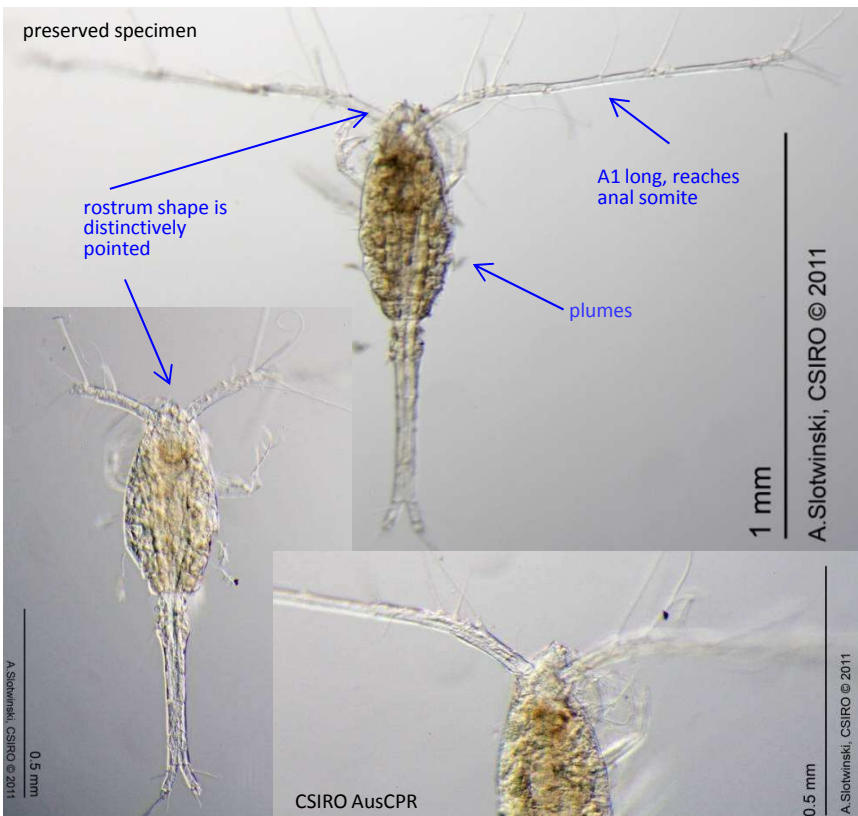
- Plumes may be present
- Anterior cephalosome is narrowed into pointed section
- A1 long, reaches anal somite
- Rostrum shape is distinctively pointed, rostrum visible in dorsal view
- Proportional lengths of urosome somites and caudal ramus 10:28:15:16:16:15
- Genital somite, twice as long as wide, swollen laterally on anterior third
- Characteristic tuft of hairs on ventral side of genital somite
- Caudal rami slightly shorter than anal somite
- Can be confused with *O. setigera*, *O. atlantica*, *O. longispina*. Consider size, body form and the length of the distal outer marginal spine on P4 Re3

Distribution

Ecology

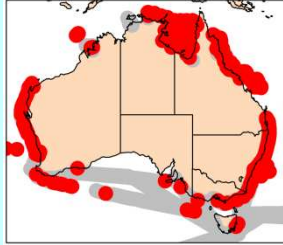


Nishida (1985)



Oithona plumifera

Baird, 1843



Phylum
Order
Family

Arthropoda
Cyclopoida
Oithonidae

Male

- To be completed

Source

Nishida (1985)

(Full reference available at
<http://www.imas.utas.edu.au/zooplankton/references>)