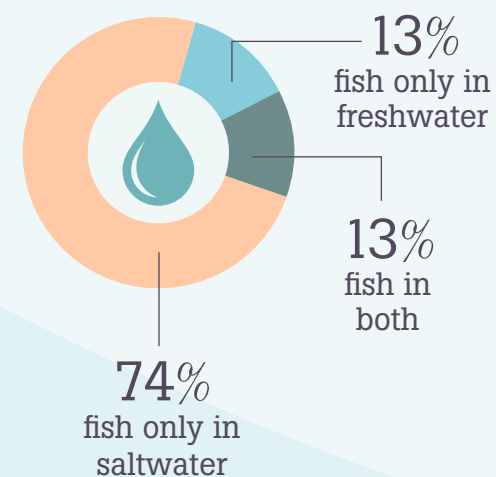


The fishers



1 in 4
Tasmanians go fishing
[106,000]
persons

The effort

They fish an average of
5 days per year

The catch

80+ species of fish and shellfish



60% is boat-based

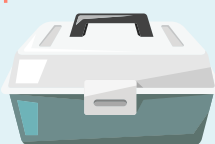
40% is shore-based



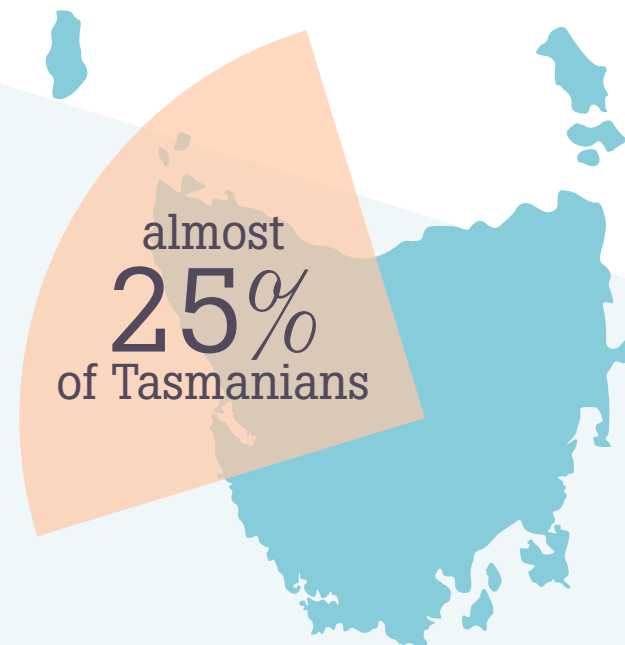
The spend

Total spend by fishers:
\$161 million per year

on fishing gear, boats/fuel, travel etc

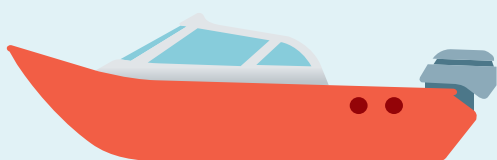


Who is fishing?



How much do they spend?

62% boats / trailers / maintenance / fuel
\$100M

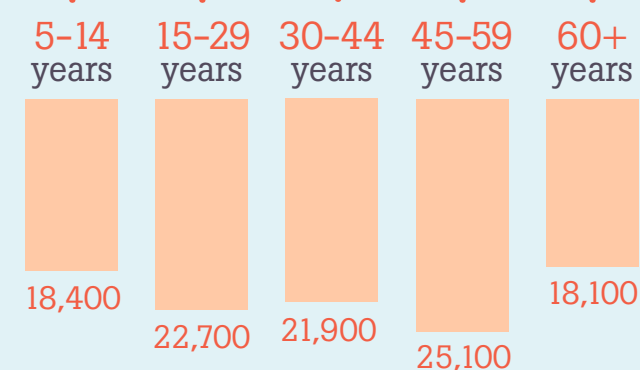


10% fishing gear
\$16M

10% travel
\$16M

18% Other

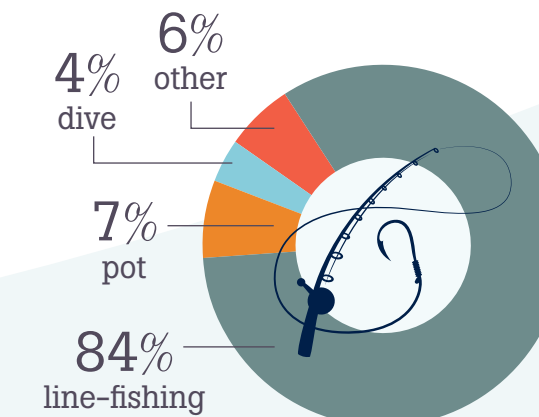
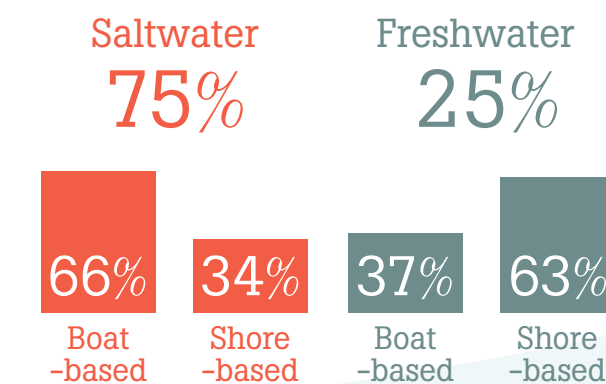
Twice as many males as females



\$161 million per year
\$1,800 per fisher

How and where?

475,000 fisher days



What's the catch?

